

3 D Blocks

Reverse Applique - Flower

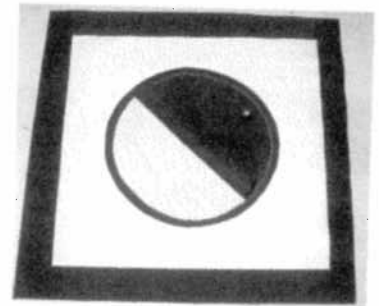
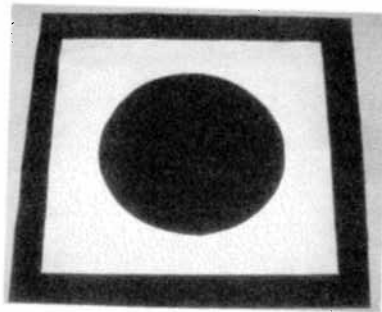
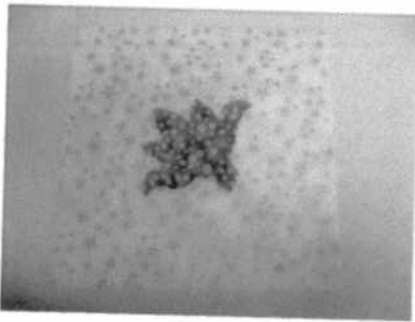
Required Items

- ★ 8 ½ " square background fabric
- ★ 8 ½ " square foreground fabric
- ★ 6 " square fabric for applique flower
- ★ 6 " square fusible web, 6 " square of stabilizer (tear away)
- ★ 7" square freezer paper
- ★ Glue stick

Metallic thread, optional for top stitching, batting and lining are optional

Instructions

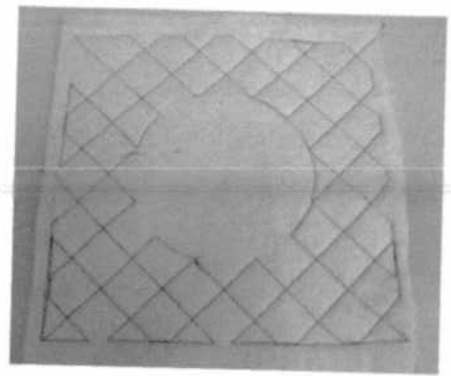
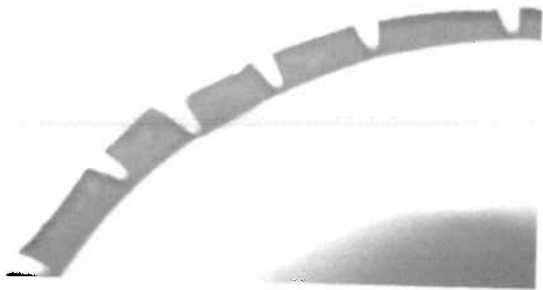
★ Trace flower shape on fusible web, note desired direction of flower for finished block. Press fusible web on the wrong side of flower fabric. Cut out flower. Centre flower on background fabric and press. Place stabilizer under background fabric and applique using desired stitch – zig zag, satin, decorative.



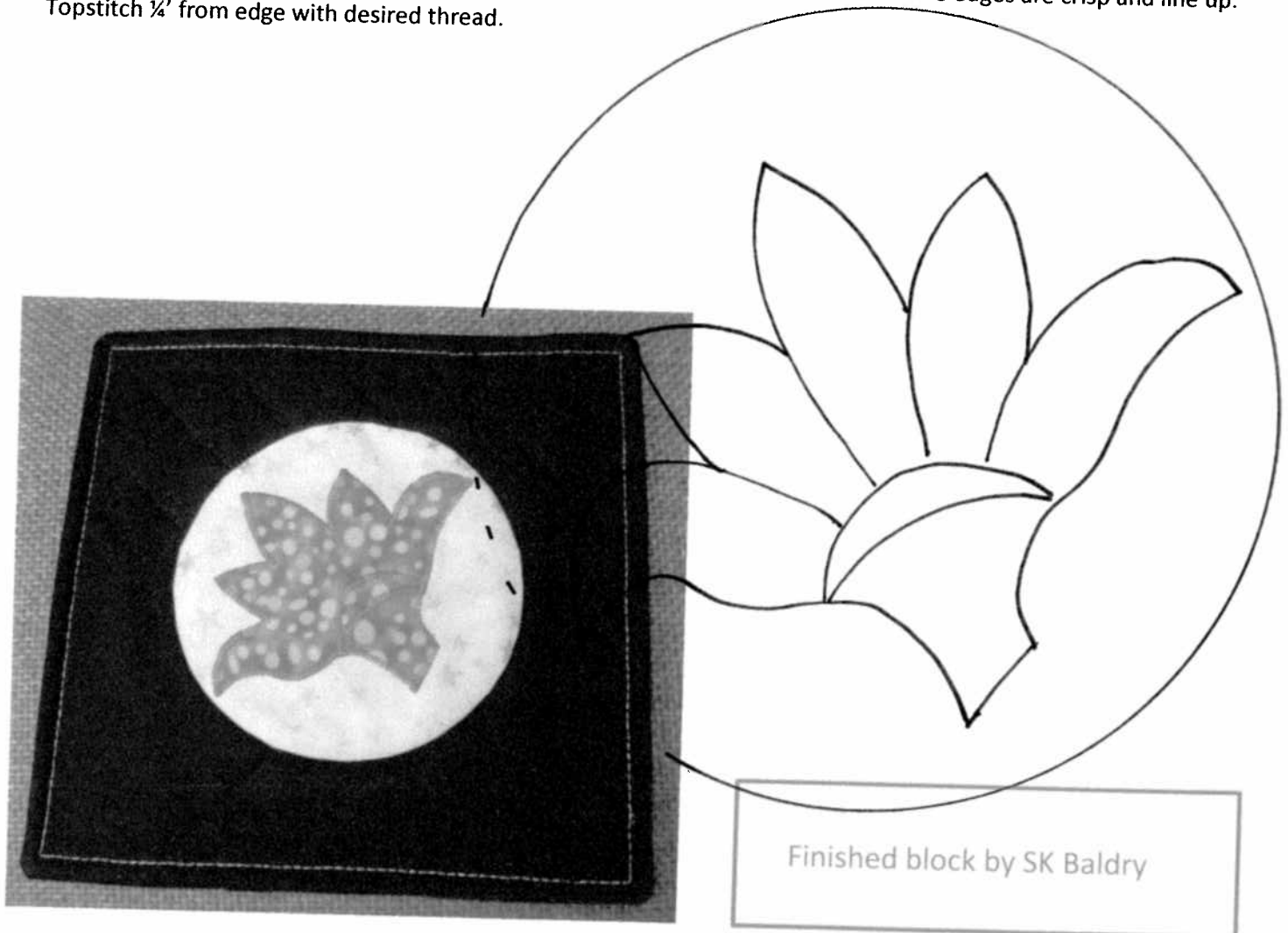
★ Trace circle shape on the non-waxy side of freezer paper. Cut this circle out, the remaining freezer paper should look like a square donut. Centre the donut shape on the foreground fabric, sticky side down and press. Cut out the hole, leaving a 3/8 " edge on the inside of the circle. Clip around edge, do not cut freezer paper. Run an edge of glue around circle on freezer paper. Turn clipped edge over and glue down to form a clean, folded edge. It is a personal choice whether to remove or trim freezer paper.

★ Turn foreground over and centre over background fabric and flower. Stitch carefully around edge of circle to secure blocks together.

★ Optional Step – Quilting – your choice for design – I drew a 1 " grid and placed an 8 ½ " square of batting under block and quilted using a continuous line. Then I lined the block.



- ★ Cut 2 – 6 ½ x 8 ½ pieces of dark fabric for backing. Press ½ " over on one long edge of each piece. Fold again and press to create a finished hem, stitch. Centre the 2 pieces on top of the block, the pieces will overlap like a slip cover for a cushion. Pin on the sides. Trim the top and bottom fabric on block to even it out with backing. Pin top and bottom to secure overlap. Stitch ¼" seam all the way around. Trim corners to reduce bulk. Turn block right side out. Poke corners square with a corner tool or poking tool. Press block to ensure edges are crisp and line up. Topstitch ¼" from edge with desired thread.



Finished Block 8 ½ " x 8 ½ "

Original concept from Christie Davidson 2011